



# Hess Remote Access Installing Juniper Network Connect

Juniper Network Connect is the VPN software that allows for connecting to the Hess Network from outside the office.

To Install:

1. Navigate to <http://remoteaccess.hess.com>



2. Click on the closest location to where you are located.
3. Log in with your Hess Username and password.
4. At the next screen, you will be instructed to 'Please Wait' until a popup like the below displays.



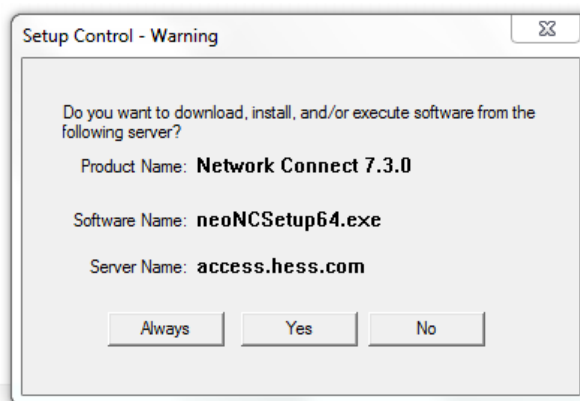
#### Please wait...

Launching Network Connect. This may take from a few seconds to a couple of minutes, depending on your bandwidth.

If an error prevents the Network Connect from loading properly, you can:

- [Check browser compatibility](#)
- [Continue](#). Not all functionality may be available.

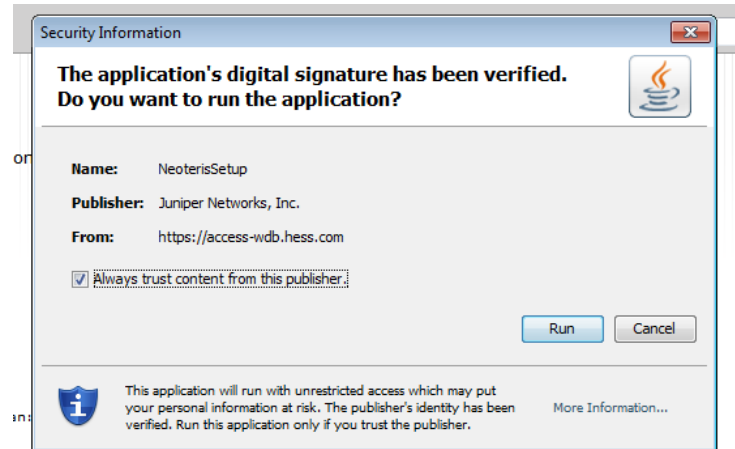
5. Please select 'Always' to install Network Connect.





# Hess Remote Access Installing Juniper Network Connect

- At the next popup click Run as pictured.



- Once you see the yellow icon with the two blinking green and white dots, you are connected to the Hess VPN.



- Finally, this page will appear and from here you can go to Global Apps or Outlook Web Access.



## Hess Remote Access Support

### Connecting with myIT

The IT Help Desk is available 24 hours a day

Global: **1 713•496•8100**

USA: **1 844•HESSHLP** (4377457)

Malaysia: **1 800•817•588**



Phone: **x8100**

Online: **myit.hess.com**